

1. Sinfonie (1986)

Friedrich Radermacher

Flöte 2

Allegro
♩ = 120

f *p* *rit.*

9

ff

15 **a tempo**

p

21

mf

28

34

40 *p*

45 *f*

50 *ff*

52 **poco rit.** **A a tempo** 7

61 **3** ^{1.} *p*

68 **2** *p* *mf*

74 *ff*

77

80

82 **B** **4** **3** **2** *p*

94 *mf cresc.*

99

104 **5** *ff*

114 **6** *p*

Detailed description of the musical score: The score is written for a single melodic line in treble clef. The key signature has one sharp (F#). The time signature is not explicitly stated but appears to be common time (C) or 4/4. The score is divided into measures 61 through 114. Measures 61-67: Measure 61 starts with a whole rest, followed by a triplet of eighth notes (F#, G, A) marked with a '3' and a first ending bracket. Measures 68-73: Measure 68 starts with a whole rest, followed by a triplet of eighth notes (F#, G, A) marked with a '2'. Measures 74-76: Measure 74 starts with a whole rest, followed by a triplet of eighth notes (F#, G, A) marked with a '3'. Measures 77-81: Measure 77 starts with a whole rest, followed by a triplet of eighth notes (F#, G, A) marked with a '3'. Measures 82-86: Measure 82 starts with a whole rest, followed by a triplet of eighth notes (F#, G, A) marked with a '4'. Measures 87-93: Measure 87 starts with a whole rest, followed by a triplet of eighth notes (F#, G, A) marked with a '3'. Measures 94-98: Measure 94 starts with a whole rest, followed by a triplet of eighth notes (F#, G, A) marked with a '2'. Measures 99-103: Measure 99 starts with a whole rest, followed by a triplet of eighth notes (F#, G, A) marked with a '3'. Measures 104-108: Measure 104 starts with a whole rest, followed by a triplet of eighth notes (F#, G, A) marked with a '5'. Measures 109-113: Measure 109 starts with a whole rest, followed by a triplet of eighth notes (F#, G, A) marked with a '6'. Measures 114-118: Measure 114 starts with a whole rest, followed by a triplet of eighth notes (F#, G, A) marked with a '6'. The score ends with a double bar line at measure 118.

125

f

132 rit. C a tempo

pp *p*

140 poco rit. D a tempo

f *mf*

147

f *sfz*

152

ff

158

p

163

p

168

p

173 E

pp

1.

176

p *f* *ff*

182

2. Satz

1.

pp

8

204

mf

212

p

2

221

mf *f*

229

p

1.

236

pp

243

Più mosso *p*

3

252

f *mf*

257 *f*

264 *mf* *mf*

272 *a2*

279 *f*

285

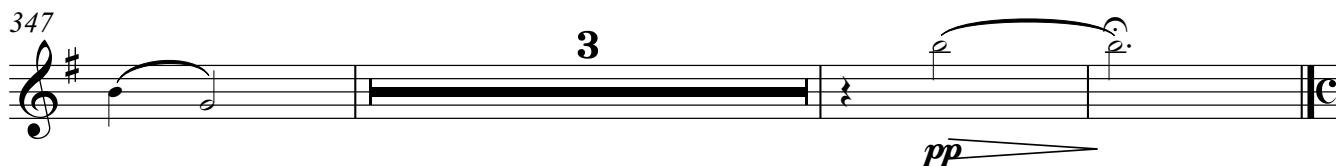
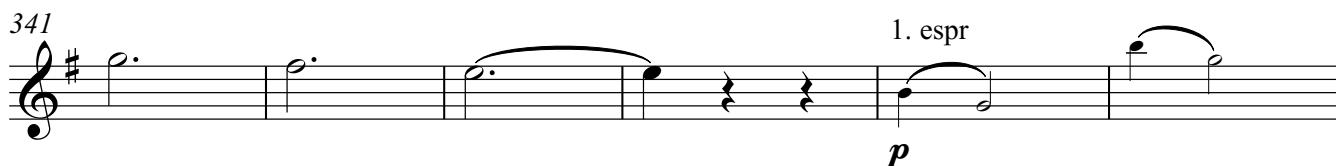
292 *mf* *p*

300 *rit.* *p* **Tempo 1**

309 *pp* *tr*

317 *mf* *p* *poco rit..*

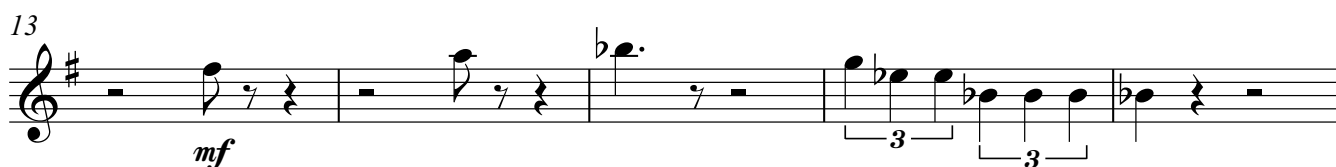
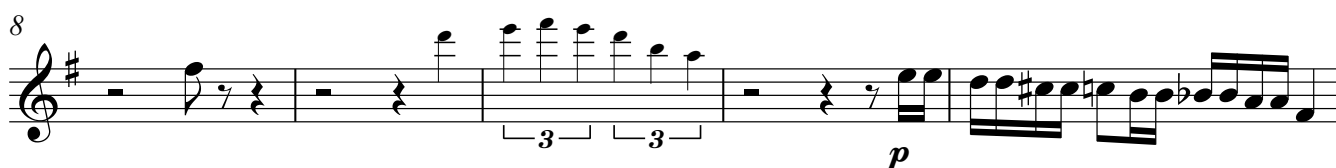
324 *a tempo* **4** **2. nimmt Piccolo** **2**



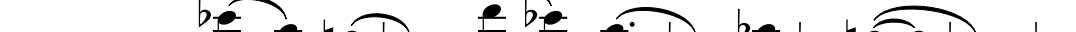
3. Satz

Allegro moderato

♩ = 138



105



mf

[illegible]

117

9

f

129

f *fp* *pp*

[illegible]

1. *p*


146 *p* *p* 3 3

151

mf 3 3 *p* *p*

[illegible]

164



ff

168

sfz

5. Satz

Allegro con brio

♩ = 140

f

7

12 *a2* *f*

17 *p* *pp* 7

29 *a2* **O** 7 2. nimmt Piccolo 3

42 2. Picc *p* *a2* *mf*

47 *f*

52 **P** 2

59 2. nimmt grosse Flöte 4 *ff*

67

130 **S** 1. *p*

135

139

144 *f*

149 *f*

157 **T** *ff* 2. nimmt Piccolo

162 *f* 2. Picc. *ff*

169

174 *fff*

179 *pp* *ff*

185

2

ff

190

26'49.2"

The image shows a musical score for two staves. The first staff begins at measure 185, marked with a treble clef and a key signature of one sharp (F#). It features a time signature of 2. The notation includes a whole rest, followed by a series of eighth and sixteenth notes, some with accidentals. The second staff begins at measure 190, also with a treble clef and key signature of one sharp. It contains a series of eighth and sixteenth notes, some with accidentals, and ends with a double bar line. A time signature of 26'49.2" is written at the end of the second staff. The dynamic marking *ff* is placed below the first staff.